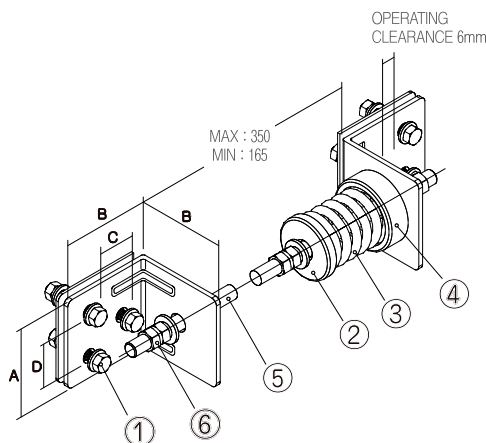
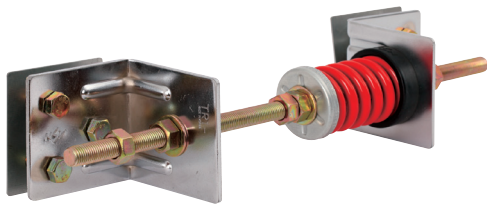


NTR Thrust Restraint (Deflection : 25mm)



■ Features

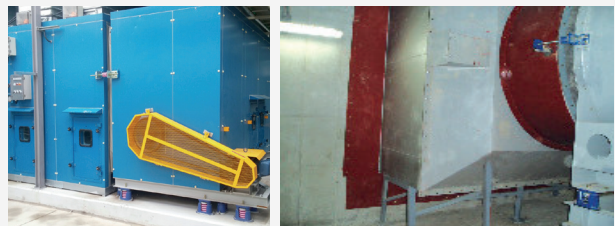
NTR, which consists of steel housing, spring, CR type rubber and space rod, is a vibration control device designed to prevent the generation of reactionary force in the direction opposite to air flow when related equipment such as fan and ventilator runs. NTR is preset to 80% of the load capacity in the production stage and users can adjust it up to 6 mm when installing it. It should be installed next to the center of the direction in which the air flows through the duct. Plus, it is easy to distinguish one from another because the springs differ in color depending on their load capacity. In general, NTR is used only when the thrust is more than 5% of the weight of the equipment.

■ Usage

- ◆ Used to prevent thrust on the joint of fan part separating canvas
- ◆ Used to prevent thrust on ventilator(Airfoil, Sirocco, Axial, In-line, etc)

■ Specification

No.	Name of Components	Material	Standard
1	Housing	SS400	KS D 3503
2	Still Cap	SS400	KS D 3503
3	Coil Spring	SUP9	KS B 2402
		HSW3	KS B 2403
4	Neoprene Cup	CR	KS M 6617
5	Threaded Rod	SS400	KS D 3503
6	Nut	SS400	KS B 1002



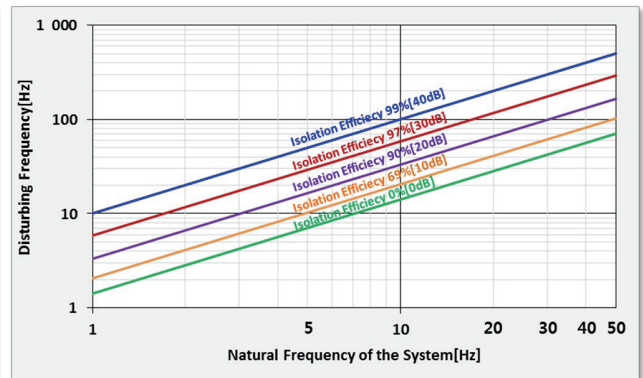
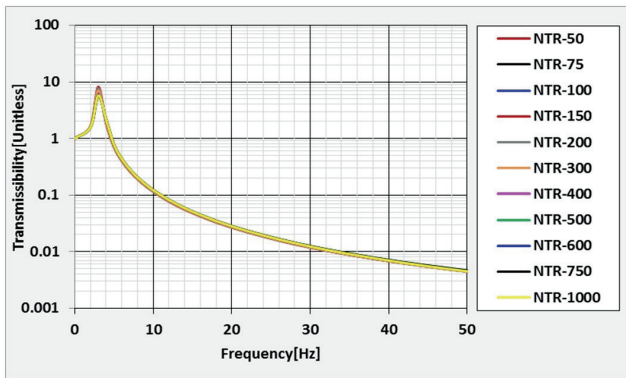
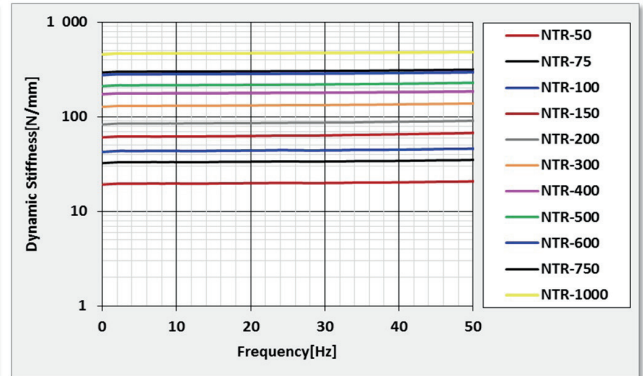
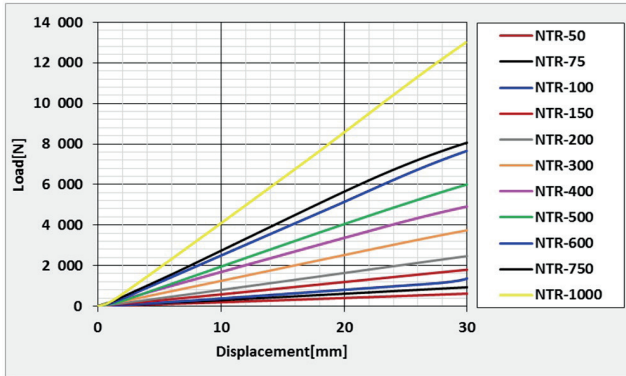
■ Dimension & Selection Guide

Type	Capacity (kgf)	Spring Constant (kgf/mm)	Deflection (mm)	Color	Dimension(mm)				
					A	B	C	D	Space Rod
NTR-A-50	50	2	25	Red	70	84	40	40	M12 x 500
NTR-A-75	75	3		Black					
NTR-A-100	100	4		Blue					
NTR-B-150	150	6	25	Brown	70	84	40	40	M16 x 500
NTR-B-200	200	8		White					
NTR-B-300	300	12		Orange					
NTR-B-400	400	16		Pink					
NTR-B-500	500	20		Green					
NTR-B-600	600	24		Blue					
NTR-B-750	750	30		Black					
NTR-B-1000	1000	40		Yellow					

(NOTE) The mentioned size and scale can be altered to improve the quality performance and capacity of the product without any notice.

NTR/NTR2 Thrust Restraint

NTR Test Data



NTR2 Test Data

